

Hayley Hunt celebrates the place she calls home

Repton Park is a magical place to live, not only is it the largest most prestigious gated development around but historically the safest too, and we have a fantastic community of which I have been part of for 20 years now

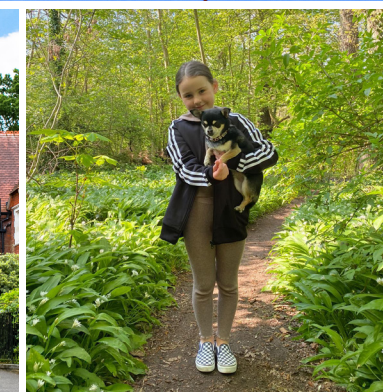
Situated in Woodford Green in the London Borough of Redbridge, this gated community is the perfect choice for those looking to relocate somewhere full of greenery, peacefulness and open spaces but also just half an hour away from Liverpool Street Station. Many traders and city workers call Repton Park home for this reason.

It is made up of 413 properties we have Luxury apartments within the original hospital buildings which I live in with high ceilings eight foot sash windows and glorious views, we have detached houses, townhouses and purpose-built modern apartments which were added to the site to give a different living experience and a unique community feel.

Set within 145 acres of beautiful parkland, Repton Park residents are lucky to be surrounded by so much wildlife and nature. They also get to benefit from direct access to Claybury Woods which was originally part of the hospital grounds before a portion was given back to the local community when Repton Park was developed, so we have another 140 acres here too we enjoy.

When walking in the woods, you can fully embrace all the wonderful produce growing right on your doorstep. You get to value watching the seasons change and discover the joy of foraging for nature's ingredients to enjoy throughout the year.

With so much green space, Repton Park is home to an abundance of



wildlife including rare birds, bats, badgers and even muntjac deer. It's a privilege to have so much nature quite literally on your doorstep.

And at the heart of the development sits the old chapel which has been converted into the exclusive Virgin Active adult only gym and spa, to further encourage healthy living. It conveniently allows us a place to swim down a gloriously gothic aisle or lift weights under a decorated domed ceiling. The

developers of Repton Park stuck to a focus of quiet, ambient lifestyle that works alongside nature.

We are so lucky to have incredible facilities and so much green space. It is such a wonderful place to call home! My company staff are also residents of Repton Park and there's nothing we don't know about our development.

Call Hunt for residential sales and Lettings available within this magnificent community. ♦

