

HUNT
Living
Repton Park





Hunt Property Services Ltd. All rights reserved. Reproduction is forbidden except by express permission of the Publishers.



Welcome

to the latest edition of Hunt Living, a magazine dedicated to all things Repton Park

First off, I would like to say what a pleasure and a privilege it is to be pioneering the way we would ultimately like estate agency to work in Repton Park, having built a reputation based on our unique, boutique approach, which enables us to offer a truly bespoke service, tailored to the individual.

Of course, being a long-term resident myself, along with most of my team, means we all have a vested interest in ensuring that Repton Park retains its status as one of the most luxurious, tranquil and safest developments in the country. Indeed, it is to this end that Hunt has always worked.

In the 24 months, since we last spoke, you'll be pleased to know that property prices on the development have continued to rise steadily. Also over this period, there has been considerable renovation work taking place. After all, some of Repton Park's properties are 23 years old, meaning many are now in need of an update.

This has certainly kept our renovations department busy, with many buyers, as well as landlords, seeking our advice on how best to maximise their property's potential. Here at Hunt we are only too happy to



help, drawing on our intimate knowledge and years of experience of renovating homes here. And for me, nothing beats the sense of satisfaction of seeing a client's delight at their home's incredible transformation.

Finally, I would like to take this opportunity to thank you all for your continued support; it really does mean the world to me.

Hayley Hunt
The Agent in Repton Park

Contents



6

HISTORY OF REPTON PARK

Discover the development's past

10

TOO GOOD TO LEAVE

The allure of Repton Park

16

LUXURY LIVING AT ITS FINEST

A home fit for a king

20

HEAVEN ON EARTH

Stunning open spaces and exclusive facilities

HUNT

26

SWEETIE PIE

Hayley's homemade apple & blackberry pie

28

NEW TO MARKET

Luxury properties for sale

42

MEET THE TEAM

A passion for Repton Park and its community

46

TIME FOR AN UPGRADE

Give your home a refresh

52

LETTING US TAKE THE STRAIN

A lettings service second to none

56

BEHIND THE SCENES

The people managing the grounds and gardens

58

BONFIRE NIGHT

A Celebration



@huntpropertyservicesltd

The history of Repton Park



A rather grand dayroom for the nurses

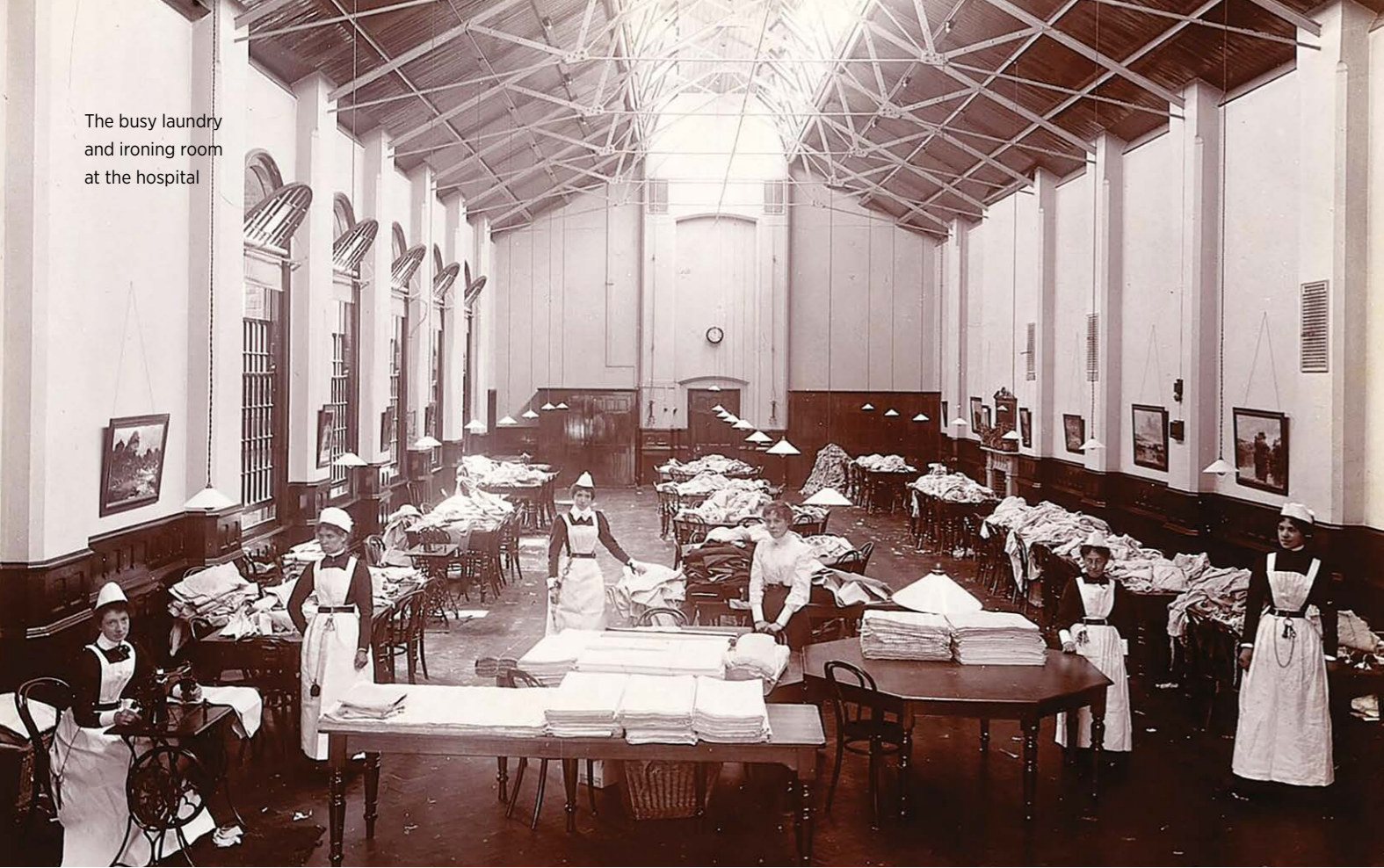
As Repton Park's most esteemed estate agent and as long-time residents ourselves, we know that it's so much more than just a luxury gated development, with the grounds and many of its buildings steeped in history. Here we shine a light on eight little known facts about what was once the Claybury Estate and more latterly the Claybury Hospital...

1 The first documentary reference to Claybury dates back to 1270 when it was a free tenement owned by Barking Abbey. The name Claybury (also known as Clayberry in some earlier records) is thought to derive from the nature of its soil. However, during the Middle Ages the site was occupied by the de la Claie family, which could also be the source of the name.

2 Notable owners of Claybury include Sir Thomas Whit, founder of St John's College Oxford, Sir Oliver Cromwell, uncle of the Lord Protector and John Fowke, Lord Mayor of London. The name of Thomas Knyvett also shows up as an owner in documents recording a royal visit from Queen Elizabeth I no less.

3 In 1786, the estate was purchased by James Hatch, originally from Bromley-by-Bow, who'd made his fortune as a malt distiller. By 1791 the old gabled house had been demolished for a new Georgian mansion, complete with stables at the rear, that is still very much in evidence today.

The busy laundry and ironing room at the hospital



4 Renowned landscape architect Humphrey Repton was hired by Hatch to advise on the gardens and grounds. A highly proficient watercolour artist, Repton prepared sketches of his designs for Claybury Hall that were presented in a red leather binder. This custom became known as Repton's Red Books, with Claybury one of the few surviving intact.

5 Upon Hatch's death, and without a male heir, the estate passed to his daughter, who upon her death and without issue, passed it to a nephew. By 1884 the estate was in the hands of a distant relative, William John Rous, who after three years decided to sell the 250-acre site to the County of Middlesex for the princely sum of £36,000.

6 The estate was deemed 'a most favourable site for a large asylum' which it duly became in 1893.

Designed by George Thomas Hine after winning a competition to find a suitable architect, the subsequent build required the top of a hill to be cut off to facilitate movement, while adhering to an 'echelon plan' that allowed uninterrupted views of the surrounding countryside, plenty of ventilation and natural light. A strong emphasis was also placed on the creation of a pleasant environment, so hence the finely decorated recreation hall and chapel that is still admired today.

7 For 104 years Claybury Asylum occupied the site, which in its heyday housed 2,500 patients, more than 500 staff, plus a dairy, bakery and kitchens. Such was the push for self-sufficiency there was even a farm until 1966, which was initially stocked with 400 pigs, 80 cows and later 30 sheep which were brought in to mow the lawns rather than for their meat.

The finely decorated recreation hall and chapel is still admired today

8 In 1997 the site was acquired by developer Crest Nicolson and was transformed into the beautiful housing development you see today, which includes luxury apartments in the sympathetically restored hospital buildings as well as a variety of new homes. As part of the planning agreement, the site was split in half, with 150 acres returned to the local authority as Claybury Woods, which is now enjoyed by the public and Repton Park residents alike. 



A painting of Claybury Hall in Hatch's time

Too good to leave

Such is the allure of Repton Park that many residents don't want to move away, so who better to find a property on site to suit their needs than Hunt

Living in Repton Park really is a lifestyle choice and one that people only tend to give up with great reluctance. Indeed, why would you want to leave a place that offers such a strong sense of community, fantastic facilities, beautiful grounds, surrounding woodland and the sense of security that residing in a luxury, gated development gives? So rather than upping sticks when their property needs change, many prefer to seek out their next home still within the park's confines.

For the fact is, many homeowners are so enamoured with the Repton Park lifestyle that leaving is simply not an option. Renters, meanwhile, are also seduced by all that the development has to offer, so that once they are in a position to own their own home, buying in Repton Park is a natural choice.

When the previous owners of The Boulevard bought the property through Hunt back in 2010 it was a four bedroom, three bathroom, three reception Harrow-style townhouse. In need of an update, the new owners called on our advice, to enable the transformation into a much more luxurious three bedroom, two bathroom, three reception residence you see today.

More recently, the owners were looking to upsize but remain within the development and again called on our services in the knowledge we are the leading estate agent for Repton Park, ►



Repton Park backs onto Claybury Woods with 300 acres to enjoy

with a highly personal interest in finding them the best possible buyer (most of the Hunt team and family live here). The house quickly sold for an amazing price which enabled the owner to relocate, with Hunt once again handling the purchase. Indeed, the owner is currently in discussion with Hunt on how best to maximise this property's potential.

The Boulevard townhouse, meanwhile, with its Harrow style design, remains one of the most popular properties on the development, and really makes the most of the park's green spaces by backing on to open grounds.

The ground floor comprises of a stunning, open plan kitchen with extended area and bi-fold doors opening on to a beautifully designed, contemporary garden, which being southwest facing, affords the most glorious sunsets.

Reception two is a stylish TV room/play room while reception three is a formal dining room. ►





A stunning open plan kitchen leads to a beautifully designed garden



As a result of the renovation, the property has undergone an amazing transformation



The garage has been converted into a gym/study room and there is a separate WC.

Moving up to the first floor, you'll find the spacious main living room complete with feature fireplace, two sets of balcony doors and a small terrace, all with lovely views across Rosebury Square. On this floor are also located two further double bedrooms and a fabulous floor-to-ceiling marble family bathroom with a large walk-in wet room.

The top floor, meanwhile, has been cleverly converted into one large master bedroom with a bespoke dressing room and over-sized ensuite shower and bathroom complete with luxury fixtures and fittings, under floor heating and a twin sink. 🏠

If you want to find out your property's potential, we at Hunt would be only too happy to advise.



Luxury living at its finest

Properties don't come much more opulent than this beautiful, detached family home on Regents Drive, which takes the Repton Park lifestyle up another notch

This handsome and expansive detached property is located on the prestigious Regents Drive, one of the most sought after locations in the luxury, gated development of Repton Park.

Offering an impressive six double bedrooms and four bathrooms, the house has been beautifully designed to the highest specification both inside and out.

Downstairs is largely open plan, with spacious kitchen and dining areas, complete with a huge skylight that bathes the space in light. The free-flowing feel of this property makes it ideal for family life as well as entertaining, with bi-fold doors leading out to the most fabulously landscaped, south facing garden. Mature trees to the side of the

plot further add to the sense of tranquillity, while a raised seating area and dining space make it the perfect place for socialising.

The front garden, meanwhile, boasts an ancient feature tree lit by fairy lights, while a larger than usual cobble stoned driveway has room to park six cars, perfect for guests. ▶



Regents Drive: designed to the highest specification



Regents Drive boasts six double bedrooms



When you're not entertaining, be entertained - Regents Drive ticks that box too, with an incredible cinema room tucked away at the side that comes with colour changing LED ceiling lights. 🎬

Repton Park is
a paradise for
nature lovers



Heaven on earth

At Repton Park, we are blessed to be surrounded by the most stunning open spaces where you can be at one with nature, and as a long-term resident herself, Hayley Hunt loves to take full advantage of this proximity

Set within 145 acres of beautiful parkland and surrounded by ancient woodland, Repton Park really is a paradise for nature lovers, and even after 20-odd years of living on the development, Hayley Hunt never tires of the abundance of green space right on her doorstep.

'Nature is my biggest passion,' attests Hayley. 'I'm constantly out there taking photographs and videos. I feel so lucky to be surrounded by nature here in Repton Park. It's something that I never take for granted.'

Most mornings you'll likely find Hayley and her dog Blossom enjoying a walk through the grounds and into the nearby woods where she loves to forage for nature's bounty according to the season. Springtime is for wild garlic, whose pungent aroma wafts throughout the woods. ►



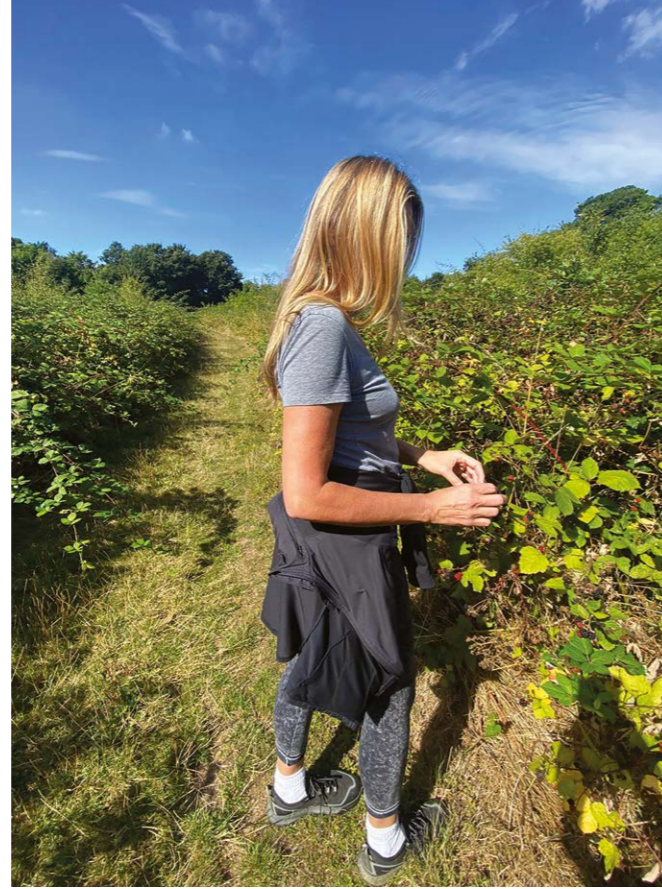
Hayley uses the green leaves that grow on the ground in several recipes, including pesto, garlic bread, soup and even topped on scrambled egg.

'Wild garlic is usually mild, so it's lovely sprinkled on top of a salad too,' she adds.

More recently, Hayley has been collecting sweet and juicy blackberries to make jam and add to smoothies. She also uses them in her signature apple and blackberry pie, a favourite with friends and family, and whose recipe you can find on the following pages.

Foraging aside, Hayley also loves spotting the different wildlife that thrive in the woods, including rare birds, bats, badgers and even Muntjac deer.

'It's a privilege to have so much nature so close by,' says Hayley. 'I find it very calming and I find it helps with my mental and physical health.'



Plenty of blackberry picking nearby



Housed in the former hospital chapel, the pool allows you to swim down a gloriously Gothic aisle, while the gym is located in the old hospital theatre, meaning you can lift weights under a stunningly decorated domed ceiling.

'To not only have so much green space, but also incredible facilities is such a blessing,' offers Hayley. 'Repton Park really is a wonderful place to call home.' 🏠



The exclusive Virgin Active gym and spa is located at the heart of Repton Park



Enjoy a wellbeing
lifestyle at Repton
Park's exclusive
spa and pool



Hayley's homemade apple & blackberry pie

Comfort food at its finest, homemade apple and blackberry pie is always a winner in my house. As well as tasting delicious, this recipe is super satisfying to make, especially if I've foraged the blackberries myself, whilst out walking my dog, Blossom. I like to add some lemon zest and a pinch of cinnamon to give the pie some additional oomph, but if you prefer yours more traditional, simply leave out.

PREP TIME: 25 minutes, plus resting time
COOKING TIME: 40 minutes
SERVES: Six to eight

INGREDIENTS

- 400g plain flour, plus extra for dusting
- 100g cold lard, diced
- 100g cold margarine, diced
- 4 Bramley apples
- 1 tbsp brown sugar
- Grated zest of 1 lemon
- A pinch of ground cinnamon
- 200g blackberries
- Milk, for brushing

METHOD

- 1 Sift the flour into a large mixing bowl. Add the lard and margarine and using your fingertips, rub it into the flour until the mixture resembles breadcrumbs.
- 2 Mix in two tablespoons of ice-cold water, adding a little more if needed, until the pastry comes together. Form it into a ball, cover and allow to rest in the fridge for about 20 minutes.
- 3 Preheat the oven to 200C/180C fan/Gas 6.
- 4 Peel, core and slice the apples into wedges and place in a bowl. Sprinkle with the brown sugar and the lemon zest and cinnamon, if using. Gently mix in the blackberries.
- 5 Remove the pastry from the fridge and cut off two thirds. Roll this larger piece out on a lightly floured surface to a circle about 2mm thick and use it to line a 24cm pie dish.
- 6 Fill with the apples and blackberries. Roll out the remaining pastry into a circle to make a lid. Place it over the filling and press the edges together, crimping them with a fork to seal the pie.
- 7 Make two slashes in the centre of the pie lid to allow the steam to escape during baking.
- 8 Brush the pie with milk and bake for 30-40 minutes until the pastry has turned golden brown. 🍴





FOR SALE



Sutherland House

A two bedroom, two bathroom,
ground floor apartment

GUIDE PRICE: £750,000 ▶

*Stylish and quirky,
the property recently
underwent a
beautiful renovation*



Set on the ground floor in one of Repton Park's handsome period buildings, this two bedroom, two bathroom property is full of character, boasting high ceilings and sash windows and even has its own front door, which is highly desirable for an apartment.

The property occupies a spectacular spot, backing on to open grounds, with a south facing private patio garden that also affords wonderful sunset views.

Stylish and quirky, the property recently underwent a beautiful renovation that included herringbone oak floors and a brand new kitchen and bathrooms. The apartment also uniquely offers French doors in the kitchen and lounge, leading directly to the garden. **H**



A stylish and quirky property

FOR SALE



The Boulevard

A four bedroom, three bathroom, three reception Harrow-style townhouse within the prestigious gated development of Repton Park

GUIDE PRICE: £1,200,000 ►





French doors lead to a pretty conservatory

Situated in an enviable position within the development, this townhouse consists of three floors. On the ground floor you'll find a kitchen with an abundance of units and fully integrated appliances, while French doors lead to a pretty conservatory with open views to the exquisitely designed low maintenance garden. Also on the ground floor are two reception rooms, an integral garage, which could be converted into another reception room, plus a utility and cloakroom.



On the first floor is the main lounge with two sets of French doors opening on to Juliette balconies and a small terrace overlooking the garden. A family bathroom and two double bedrooms are also located on this floor. On the top floor sits the principal bedroom with ensuite bathroom and a further bedroom, which also comes with an ensuite. 🏠



This charming property has stunning interiors throughout and is immaculately presented with high end fixtures and fittings

FOR SALE




Bradfield House

A four bedroom, four bathroom, one level apartment with lift and underground private car park with four private parking spaces

GUIDE PRICE: £1,000,000



Bradfield House's extra large double-sized kitchen diner and two reception rooms make this fabulous apartment a great property for anyone looking to downsize. All four bedrooms benefit from double fitted wardrobes, while an entry phone to this private block adds extra security.

Meanwhile, a southwest-facing lounge affords wonderful views of the open grounds and treetops, as well as offering stunning sunsets to enjoy. 





FOR SALE



Rosebury Square

A contemporary, four double bedroom, three bathroom, two reception townhouse

GUIDE PRICE: £1,150,000 ▶



The principle bedroom comes with ensuite shower room and dressing room and boasts stunning views

Offering luxury, spacious accommodation in all rooms, this three-storey property makes a special and stylish family home. On the ground floor a grand entrance hallway, complete with a stunning glass doorway and white porcelain floor, leads to the designer kitchen that comes with white quartz surfaces and fully integrated high-end appliances. Also on this floor is a separate utility and cloakroom.

Outside, a south-facing garden comes with mature shrubs and stone flooring for low maintenance. The garage has been converted to a further ground floor lounge/TV room.

On the second floor you'll find a magnificent large reception room with feature fireplace as well as a terrace overlooking the beautiful manicured gardens. Two double bedrooms and a family bathroom are also on this floor.

Meanwhile, on the top floor, is the principle bedroom, which comes with an ensuite shower room and dressing room, and boasts stunning views across the square. A further bedroom also comes with an ensuite shower room. In addition, the property has a large, boarded loft space. 🏠



Meet the team

Small but perfectly formed, the team at Hunt consists of close-knit family and friends, who share a passion for property and serving their Repton Park community

Hayley Hunt

DIRECTOR

It's Hayley's optimism, energy and can-do attitude that has taken her to the top in local estate agency – in fact it's what this very business was founded upon. When looking to rent out her Repton Park apartment some 13-odd years ago, she approached a notable local estate agent to get a valuation. When told what she could expect, Hayley knew she could do much better, and what's more, she went on to singlehandedly prove it. Soon neighbours were calling on her services and what began as a sideline (at the time she was modelling and running a designer handbag business), quickly became her main gig with her reputation spreading via word of mouth. Indeed, even today, it's how Hunt gets most of its business, with Hayley's friendly, chatty approach and genuine passion for property much appreciated by clients, many of who go on to become friends. Being the area's most successful selling agent specialising in high end properties is not the only string to Hayley's bow, however, as she is also an expert in property renovation and has even won awards for her project managing work. Property aside, Hayley's other great loves are her son (to whom she is extremely close, having raised him as a single mum) and being out and about in nature walking her dog Blossom.

Jonathan Hunt

FINANCE MANAGER

With his athletic physique and competitive nature, it should come as little surprise to discover that Jonathan was once an elite sportsman – a professional footballer, no less. Having made more than 200 appearances in the Football League with a variety of clubs and played in the Premier League with Derby County. Jonathan, also a long-time resident of Repton Park, draws on the professionalism of his previous vocation to bring a razor-sharp focus and an incredible eye for detail to his role at Hunt. For Jonathan, his job is quite literally a numbers game, which he runs meticulously to ensure all payments get to where they should be on time, all of the time. It's also a family affair for Jonathan, being Hayley's brother, but as he testifies, at Hunt everyone gets along like one big, happy family, whether you are actually related or not. With his sporting background,



Jonathan is also very aware of the importance of team morale, which is why he and Hayley like to spend time socialising with the team outside the office. In addition, family time ranks highly as does cycling and playing golf, after which you'll find him propping up the bar at a local hostelry, downing a well-deserved pint. ►

Meet the team *continued*



Olivia Sullivan

LETTINGS & MAINTENANCE CO-ORDINATOR

At 23 years old, Olivia might be the baby of the office, but her hard-working, can-do, professional approach would be a credit to someone twice her age. An Essex girl through and through, she lives at home still with mum, dad, big sis and baby niece, but such is her passion for property, she would one day like a home of her own, just not quite yet! For now, she's more than happy dealing with other people's property concerns, whatever they might be. Nothing is ever too much for our Olivia, as she genuinely loves to help wherever she can. Her bright and bubbly personality makes her a big hit with tenants and landlords alike, and she fits right in with the fun, up beat and sometimes crazy office atmosphere here at Hunt. For Olivia, the best aspects of her job are that every day is different and she's constantly meeting new people. What clients might not know about her, however, is that she's also a performing artist and dancer and has appeared in not one, but two West End shows. When not at Hunt or on the stage, Olivia likes nothing better than kicking back with friends over a glass of wine and some sushi.



Debbie Russell

SENIOR SALES CO-ORDINATOR

Such is the pace of life in the Hunt office that things can get pretty hectic, but it's largely thanks to super-organised Debbie that everyone stays focused and on track. Debbie, yet another member of the Hunt team who resides in Repton Park, gleaned her organisational skills from working for two decades in a stockbrokers in the city, however, with the arrival of her son, she decided to put her career on hold. After a four-year sojourn in Singapore with her husband's job, Debbie found herself back in Woodford where she hooked up with old school pal, our director Hayley Hunt (the pair have been friends since the age of 11). Looking for a new team member, Hayley brought Debbie on board, knowing she would be a fantastic asset, which, over the subsequent years, has proved exactly right. Organisational qualities aside, Debbie prides herself on being friendly and approachable - she enjoys getting to know her clients and still gets a huge thrill when handing over keys to their new homes. She loves that there's never a dull day in the Hunt office and that working here is sociable and good fun. Out of the office, Debbie's sociable side continues to be at the fore, with eating out with friends being her favourite thing to do.

Breathing new life

Transforming tired and dated spaces into beautiful places perfect for modern living is Hayley Hunt's speciality, and no where is this more evident than at her most recent refurbishment in Repton Park

They say that good things come to those who wait, and that certainly seems to be the case for the recent buyer of a spacious, three bedroom, three bathroom apartment in one of Repton Park's finest period buildings. For several years, Hayley Hunt has been searching for the perfect property for her client, who was looking to relocate to the luxury, gated development from Chelsea.

'He specifically wanted a very large apartment and he had very high expectations of what it should be like,' recalls Hayley. 'That's why it took a few years for me to source him exactly what ▶



Take a look at this recent project in one of Repton Park's original period buildings. Here we transformed a tired and somewhat outdated apartment into a stunning, modern home worthy of its beautiful location



Before

he wanted, which in the end was an off market listing that I knew would be just perfect.'

Indeed, before anyone else had even seen it, the client snapped it up. 'He was completely over the moon and he secured it straight away,' confirms Hayley, who takes considerable pride in the truly bespoke service that her company offers, taking the time to match discerning individuals with their dream homes.

But of course, that's not the only service that Hunt can provide, with renovations also being a major part of the business, and with the Goldsmith House property in need of updating, Hayley was keen to let her client know exactly what could be achieved.

'First off, I explained to him the property's potential,' Hayley begins. 'It was 22 years old and hadn't been well maintained, with dated bathrooms and a tired kitchen that had a stud

wall separating it from the lounge. I explained how opening up the wall would improve the light and flow and how to achieve a much more modern look.'

Not content with just explaining what a renovation could achieve, Hayley then took her client to a very similar property that Hunt had refurbished. 'Being able to actually see what his apartment would look like afterwards definitely helped seal the deal,' attests Hayley, who has refreshed and modernised so many properties in Repton Park over the years that she's become a much sought after expert in this field.

Setting a timeframe of just eight weeks, Hayley and her highly experienced team of tradespeople set about transforming the property. 'The client is a single dad, whose children stay on a regular bases, so creating a more open plan space is ►



After

much more conducive to family living,' explains Hayley, who as well as opening up the kitchen and lounge (all the better for showcasing a beautiful bay window with views over Repton Park's stunning grounds), also created a breakfast bar for the children to sit up at, as well as fitting sleek, new units and granite tops.


It was with children in mind that Hayley also chose the flooring. 'It's Karndean which is known for being really good quality and is waterproof and super easy to maintain,' she says. However, in the bedrooms she opted for luxurious, fluffy carpet to give a cosier feel.

Meanwhile, two of the bathrooms now benefit from large, walk in showers, having extended the space by taking away the void at the side of the rooms, while the

third, family bathroom has been cleverly refreshed and modernised.

'It's now in a very contemporary style throughout,' concludes Hayley, who stuck to a colour palette of varying shades of grey and white to achieve this objective, while pops of silver come from the high-end fixtures and fittings that have also been installed.

Suffice to say that Hayley's client is delighted with the end result, and better still, the apartment has gone up considerably in value thanks to the refurbishment. Now that's what we call a win, win!

If you're considering a renovation, speak to Hayley Hunt who can offer expert advice on how best to upgrade while adding space and value to your property. 

Before



After

Hunt specialise in home refurbishment and offer expert advice on how to maximise your property



Letting us take the strain

Being a landlord can feel like hard work, which is where our dedicated lettings team come into their own, offering a fully managed service that takes care of all your maintenance and tenants' needs, allowing you to simply sit back and reap the rewards



Hunt's lettings portfolio is run by a highly professional and motivated team whose focused approach ensures that your property is rented swiftly to only the most reputable of tenants. Indeed, our comprehensive background checks and referencing process enables us to find you the perfect tenant.

At Hunt we pride ourselves on offering an exemplary level of service across all aspects of the business, with our unique, boutique approach paying dividends for landlords seeking to have their rental property fully managed.

Working with a dedicated team of professional local contractors, we are able to react quickly should a maintenance issue arise, thus ensuring that your property is kept in pristine condition and that your tenant feels respected and fully listened to.

Keeping your rental income and property protected is a vital part of our ►





service and we are continuously reviewing relevant legislation while implementing new policies and partnerships.

In addition, we offer a fully independent check-in and checkout service through our partnerships with leading surveyors and inventory specialists. Our inventories are therefore extremely detailed and supported by photographs, ensuring that we have all the evidence, should a claim ever arise.


Our proactive stance extends to regular inspections and feedback to our landlords, giving them the peace of mind that their property is being well cared for at all times.

Indeed, such is our reputation for managing and maintaining rental

properties to the highest possible standard that a high number of loyal landlords have continued to work with us over many years.

This is especially true of our Repton Park landlords, and tenants too, who greatly appreciate our unrivalled knowledge of this community. Our director, Hayley Hunt, and several of the team are long-term residents, which makes our service so incredibly personal. Being property owners and landlords on the development means it is in our interest to maintain the safe, friendly and well-managed community we love and which in turn, enables us to command the highest prices for lettings and sales.

Just let

At Hunt, we specialise in letting luxury properties in Repton Park, like this gorgeous apartment in Wentworth House, which has just been snapped up for a top rental price. Boasting two bedrooms, two bathrooms and two reception rooms, the property is set in one of the original period buildings and as such has many Victorian features, including high ceilings and sash windows. Immaculately presented throughout, this fabulous, high spec home immediately wows with a grand entrance hallway. Its fully integrated kitchen offering a range of built in appliances, as well as a breakfast bar leading on to a separate dining room. The spacious lounge comes complete with feature fireplace, while French doors open onto a private patio. Amtico flooring throughout adds to the apartment's flow and sense of space, while storage needs are met with extra fitted and extended closets. The master bedroom also has a large fitted closet as well an ensuite shower room, while the second bedroom is adjacent to the family bathroom. 

Behind the scenes

We meet the people who work tirelessly to ensure Repton Park is well managed and secure with pristine gardens and grounds

FIRST PORT

There can be little doubt that Repton Park is managed in a highly professional manner and that's thanks to First Port, the resident management company that's been in charge of the development since it first opened its gates some 22 years ago. Back then however, it went by a different name, Peveral OM, and was appointed by the freeholder, Crest Nicholson, to ensure that Repton Park lived up to its status as one of the most prestigious residential developments in the country, and that very much remains its prime objective today.

To achieve this end, First Port provides a wide range of services that includes maintaining high health and safety standards, managing repairs, maintenance and major works, safeguarding the estate's finances and liaising closely with the Repton Park community to meet residents' requests and queries. Indeed, the company has a very close working partnership with the Repton Park Residents Association with both determined that the development remains a tranquil and special place.

With 14 members of staff operating out of the development, including concierges, cleaners and maintenance operatives, the onsite team takes



a very hands on approach to its role, that even extends to helping to arrange community social and fundraising events. Several of the team have served the Repton Park community for many years, and are considered by residents to be an integral part of it, all of which further adds to Repton Park's reputation of one of the nicest places not just to live, but to work too.

MBS

Set within 145 acres, Repton Park is famed for its stunning grounds that include open grass areas, large mature trees, formal flowerbeds and manicured hedges. Maintaining this abundance of green space is no easy task, however, which is where MBS comes in. This Essex-based grounds maintenance and landscaping provider has been tending the site since the outset and has built up an intimate knowledge of all aspects of the parkland over the years.

From mowing lawns and undertaking tree work to planting bulbs and trimming hedges, no job is too big or too small for MBS, which also offers a hard landscaping service, meaning it can perform paving and fence repairs too. Not content to rest on its laurels, MBS is always looking at ways to further improve the grounds at Repton Park and has recently established new shrub beds, planted trees and developed several wildflower areas.

With three members of staff on site every weekday (this can increase to five depending on the workload), someone is always on hand should an emergency occur. Working closely with First Port, MBS has similarly built up good relationships with the residents who appreciate the effort the company goes to in keeping their outside environment in such pristine condition.



SENTRA



One of the biggest draws of Repton Park is the fact that it is such a safe and secure place to live and much of the reason for this is down to Sentra Solutions, an Essex-based company that

has been providing professional and reliable security services to the development since 2018. Residents have complete peace of mind knowing that the gated entrance, complete with security barrier, is manned 24 hours a day while Sentra's security guards monitor the park 365 days of the year. These guards patrol the development at various times, both on foot and in a security vehicle, getting excellent coverage and surveillance of the area.

Armed with radios and body cameras, the guards are able to provide the First Port onsite team with support while dealing with any situations that should arise in a quick and efficient manner. Sentra also operates comprehensive CCTV systems at various locations throughout the development while a vehicle recognition system, that records all traffic coming in and out of Repton Park, further boosts security on the development.

Integrity, skill and cheerfulness are the qualities that the company prides itself on, and it's certainly true that the team at Repton Park display these attributes. What's more, they are all SIA approved officers (the industry body that ensures high standards in private security through various training programs), and if required, they boast an average call out time of just two to three minutes. 📞

Blaze of glory

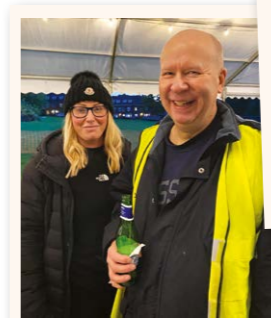
No-one celebrates Bonfire Night quite as spectacularly as the residents of Repton Park, and this year's event was bigger and better than ever

Community spirit is never in short supply in Repton Park and it's what helped make our most recent firework and laser display such a success. As well as an amazing show that lit up the skies, all to the accompaniment of rousing music, there were also stalls serving delicious food and beverages and even a children's entertainer – no wonder everyone described the atmosphere as nothing short of electric!

Held on the community cricket field, this year's event also saw a huge marquee running down one side, and thank goodness it was there because the heavens opened on the allotted evening, but everyone could still enjoy the show while staying warm and dry.

'It was a massive expense having the marquee,' admits long-time resident Hayley Hunt, one of the event's organisers and whose company, Hunt Property Services, was one of the supporting sponsors. 'But in the end it was so worth it. I think you have to plan for rain for an event in November and having the marquee absolutely saved the day.'

Organising this year's Bonfire Night display



Rain certainly didn't stop play at the Repton Park Fireworks display



was a labour of love for all involved. 'I have such fond memories of Guy Fawkes night growing up, with my dad setting up the fireworks in plant pots in the playground near where we lived. Sometimes they shot sideways and went up his trouser leg. It was a right old carry on,' recalls Hayley with a laugh.

Thankfully no such incidents occurred at the Repton Park event, where health and safety standards were strictly followed. 'But it's always a big challenge pulling off such a huge occasion,' concedes Hayley, who reckons that around 500 people



attended. 'Not least was the logistics of doing it on a field with no power. We had to hire in a gigantic generator to power the lasers and the music, and smaller ones to power the

stalls, marquee and lighting. Being an organiser is fun, but it is exhausting.'

However, seeing so many happy faces makes all the hard work worthwhile. 'It's lovely to see the children enjoying themselves so much,' Hayley confirms.

What's more, as one of the show's supporting sponsors, Hayley gets to celebrate her brand with the Repton Park community while supporting the residents after so many years of supporting her and her business. 'It's an opportunity for me to give back because everyone is always so supportive of me,' she reasons.

The Repton Park Residents Association has many more exciting events in store over the coming months, so watch this space. 



732 Chigwell Road, Woodford Green, Essex, IG8 8AL

020 8502 7667 • info@huntpropertyservices.co.uk • www.huntpropertyservices.co.uk

 [@huntpropertyservicesltd](https://www.facebook.com/huntpropertyservicesltd)  [@huntpropertyservicesltd](https://www.instagram.com/huntpropertyservicesltd)